



Model Number

MJ35-F12-1N

Features

- Comfort series
- 35 mm flush

Technical Data

General specifications

Switching function		Normally open (NO)
Output type		NAMUR
Rated operating distance	s_n	35 mm
Installation		flush
Assured operating distance	s_a	0 ... 35 mm
Output type		2-wire

Nominal ratings

Nominal voltage	U_o	8.2 V (R_i approx. 1 k Ω)
Switching frequency	f	0 ... 5000 Hz
Current consumption		
Magnet detected		≥ 3 mA
Magnet not detected		≤ 1 mA
Switching state indicator		LED, yellow

Functional safety related parameters

MTTF _d		2781 a
Mission Time (T_M)		20 a
Diagnostic Coverage (DC)		0 %

Ambient conditions

Ambient temperature		-25 ... 70 °C (-13 ... 158 °F)
---------------------	--	--------------------------------

Mechanical specifications

Connection type		cabl PVC , 2 m
Core cross-section		0.34 mm ²
Housing material		anodized aluminum
Sensing face		PBT
Degree of protection		IP67

General information

Use in the hazardous area		see instruction manuals
Category		2G

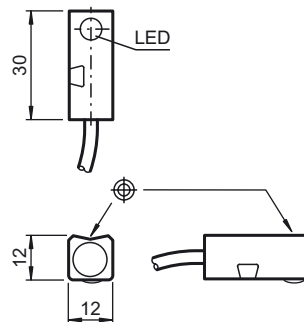
Compliance with standards and directives

Standard conformity		
NAMUR		EN 60947-5-6:2000 IEC 60947-5-6:1999
Standards		EN 60947-5-2:2007 EN 60947-5-2/A1:2012 IEC 60947-5-2:2007 IEC 60947-5-2 AMD 1:2012

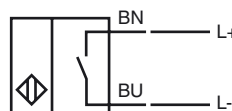
Approvals and certificates

FM approval		
Control drawing		116-0165
CCC approval		CCC approval / marking not required for products rated ≤ 36 V

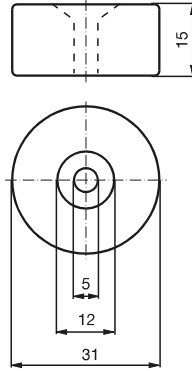
Dimensions



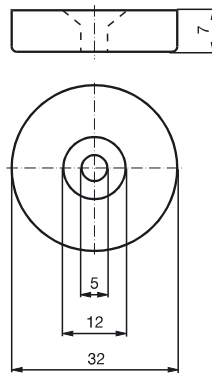
Electrical Connection



Magnet DM 60-31-15



Magnet DM 25-32-07



Equipment protection level Gb

CE marking	CE 0102	
ATEX marking	II 2G Ex ib IIC T6 Gb	
Standards	EN 60079-0:2012+A11:2013, EN 60079-11:2012 Ignition protection "Intrinsic safety" Use is restricted to the following stated conditions	
Appropriate type	MJ35-F12-1N	
Effective internal capacitance	C_i	$\leq 15 \text{ nF}$; a cable length of 10 m is considered.
Effective internal inductance	L_i	$\leq 35 \text{ }\mu\text{H}$; a cable length of 10 m is considered.
Special conditions		

Release date: 2019-04-23 16:42 Date of issue: 2019-04-23 117767_eng.xml