



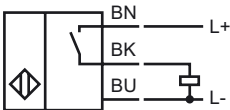
**Model Number**

**CBN7-F46-E2**

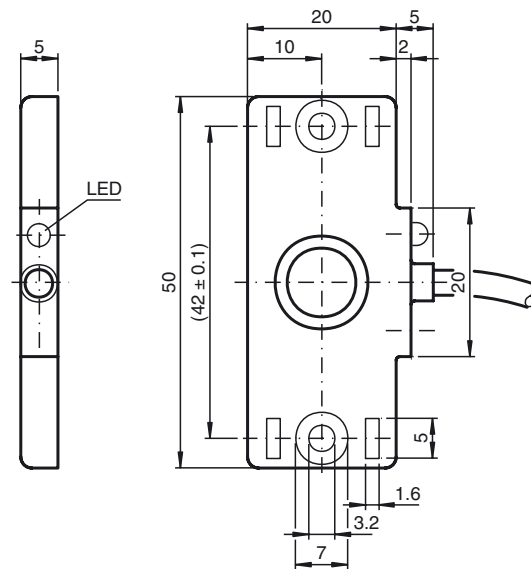
**Features**

- 7 mm not embeddable
- Flat housing
- Mounting slots for cable ties

**Connection**



**Dimensions**



**Technical Data**

**General specifications**

|                            |                |               |
|----------------------------|----------------|---------------|
| Switching element function | PNP            | NO            |
| Rated operating distance   | $s_n$          | 7 mm          |
| Installation               | not embeddable |               |
| Output polarity            | DC             |               |
| Assured operating distance | $s_a$          | 0 ... 5.67 mm |

**Nominal ratings**

|                                   |                            |                           |
|-----------------------------------|----------------------------|---------------------------|
| <b>Installation conditions</b>    |                            |                           |
| B                                 |                            | 5 mm                      |
| C                                 |                            | 20 mm                     |
| F                                 |                            | 20 mm / 50 mm             |
| Operating voltage                 | $U_B$                      | 10 ... 30 V DC            |
| Switching frequency               | f                          | 0 ... 5 Hz                |
| Hysteresis                        | H                          | 1 ... 10 typ. 5 %         |
| Reverse polarity protected        | reverse polarity protected |                           |
| Short-circuit protection          | pulsing                    |                           |
| Voltage drop                      | $U_d$                      | $\leq 2$ V                |
| Operating current                 | $I_L$                      | 0 ... 100 mA              |
| Lowest operating current          | $I_m$                      | 0 mA                      |
| Off-state current                 | $I_r$                      | 0 ... 0.5 mA typ. 0.01 mA |
| No-load supply current            | $I_0$                      | $\leq 15$ mA              |
| Indication of the switching state | LED, yellow                |                           |

**Indicators/operating means**

|            |                            |
|------------|----------------------------|
| LED yellow | indication switching state |
|------------|----------------------------|

**Ambient conditions**

|                     |                                |
|---------------------|--------------------------------|
| Ambient temperature | -25 ... 70 °C (-13 ... 158 °F) |
| Storage temperature | -40 ... 85 °C (-40 ... 185 °F) |

**Mechanical specifications**

|                    |                      |
|--------------------|----------------------|
| Connection type    | cable PVC , 2 m      |
| Core cross-section | 0.14 mm <sup>2</sup> |
| Housing material   | PBT                  |
| Sensing face       | PBT                  |
| Protection degree  | IP67                 |

**Compliance with standards and directives**

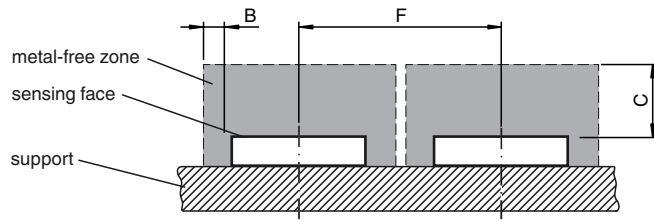
|                            |   |
|----------------------------|---|
| <b>Standard conformity</b> |   |
| Standards                  | EN 60947-5-2:2007<br>IEC 60947-5-2:2007 |

**Approvals and certificates**

|              |  |
|--------------|--|
| UL approval  | cULus Listed, General Purpose  |
| CSA approval | cCSAus Listed, General Purpose   |
| CCC approval | Products with a maximum operating voltage of $\leq 36$ V do not bear a CCC marking because they do not require approval. |

Release date: 2011-07-21 11:52 Date of issue: 2011-07-26 239734\_eng.xml

Installation conditions



Release date: 2011-07-21 11:52 Date of issue: 2011-07-26 239734\_eng.xml